

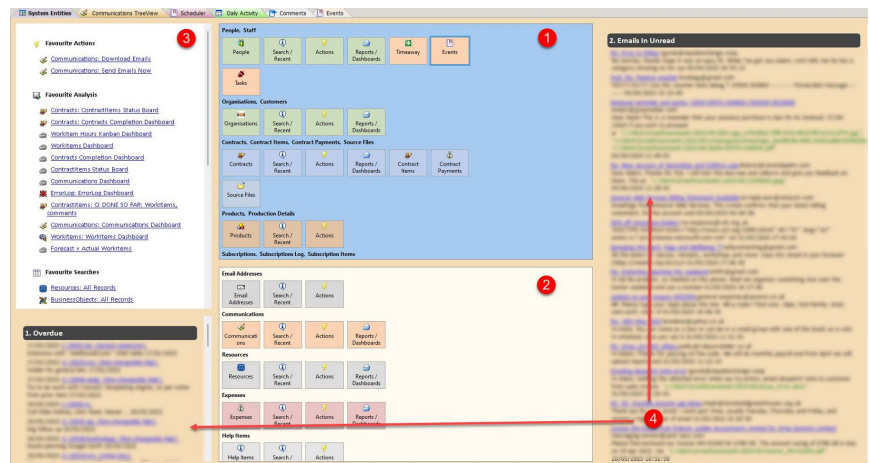
Customizing the System Entities Screen

The System Entities screen is your starting point for accessing features of your Orixia App. It can be extensively customized.

Developers can extend it widely, adding whole new panels, containing elements of their own design.

Individual users can add/remove and change the visibility of all items on their own screen. This document describes how to change the look of your own screen.

The System Entities Screen



Standard Elements on the System Entities Screen

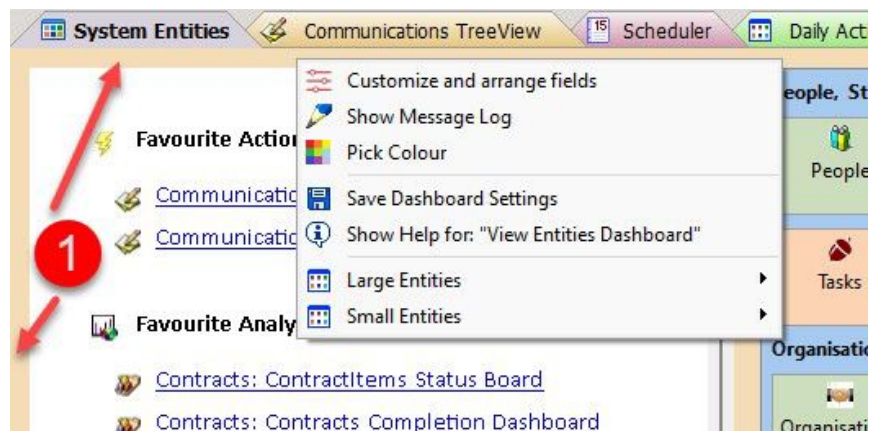
1. "Large Entities" panel.
2. "Small Entities" panel.
3. "Favourites" area: Shows recently clicked actions, searches and analysis.
4. Two "Dataviewers" have been added to this Orixia App by its developer. Your App may contain different elements.

The full details of the System Entities screen are described here:

[System Entities Screen](#)

For more information please review this link.

Customizing the Screen



Showing the "Customize" menu in the System Entities screen

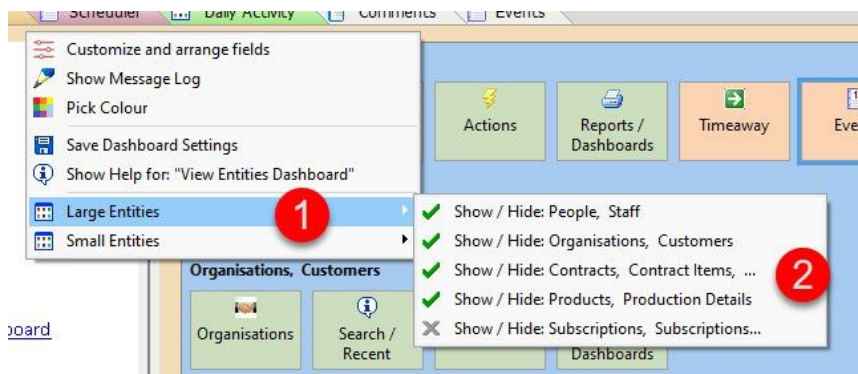
To activate this menu, you must **right click** with the mouse somewhere on the **background** of the System Entities screen, as shown at 1., in the image.

This opens the Customize menu. To rearrange the elements on the screen, click "Customize and arrange fields", you can then re-arrange the layout of items however you wish.

Full details of customizing Orixia Layouts is given here:

[Customizing data-layouts in Orixia](#)

Changing the visibility of Entities



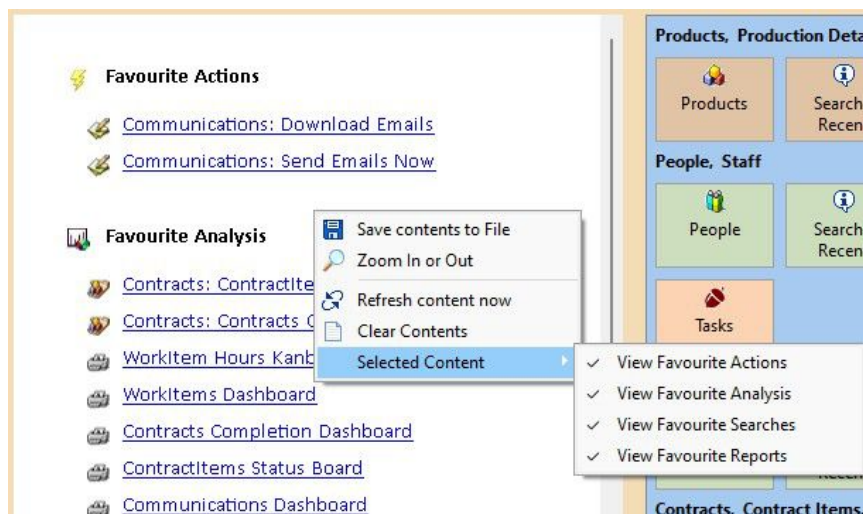
Small and Large Entity visibility menu

If there is an Entity in your system it will be shown in the System Entities screen if the visibility is set. To change this:

1. Click on the Large Entities menu-item.
2. Click on any item in the list, this will toggle the visibility of the item. All items shown with green ticks are visible.

REMEMBER: You can change the order of the items on the screen by clicking on the Name. Clicking on the name of an item (such as "People" or "Products" will move it to the top of the list of entities.

Customizing the "favourites" panel



Customizing the favourites panel

The contents of the favourites panel can also be customized. Right click on it to access the menu, click on "Selected Content" and then toggle the visibility of the different elements as required.

What appears on the System Entities screen?

All basic Orixia Apps (which have not been highly customized) feature the System Entities Screen, and in it the "Favourites" panel as well as the Large and Small Entities Panels. All other elements are added dynamically as your App starts up, based on Resources which are present at start-up.

Dynamic Elements are added to the System Entities screen by adding **Resources** records. If an Orixia Developer adds a **dataviewer** to an Orixia App marked with the location "System", it will appear in the System Entities screen on start up. Note that newly added elements do not appear automatically. The Developer needs to **customize** the System Entities screen once the new resource has been created, adding it to the layout of the screen.

